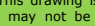


**THIS DRAWING INDICATES THE EXISTING ELECTRICAL
INFRASTRUCTURE/SERVICES OVERLAYED ONTO THE NEW PROPOSED
MAIN STREET LAYOUT.**

EXISTING ESB MINI
PILLAR - POSSIBLE
SUPPLY FOR
PROPOSED PUBLIC
LIGHTING

FOR CONTINUATION SEE
ARD-MET-ZZ-XX-DR-E-6001BE

P01	DEC.'25	FOR PLANNING
rev	date	description



La Valle House
Upper Dargle Road
Bray
Co. Wick
A98 7WZ
Ireland

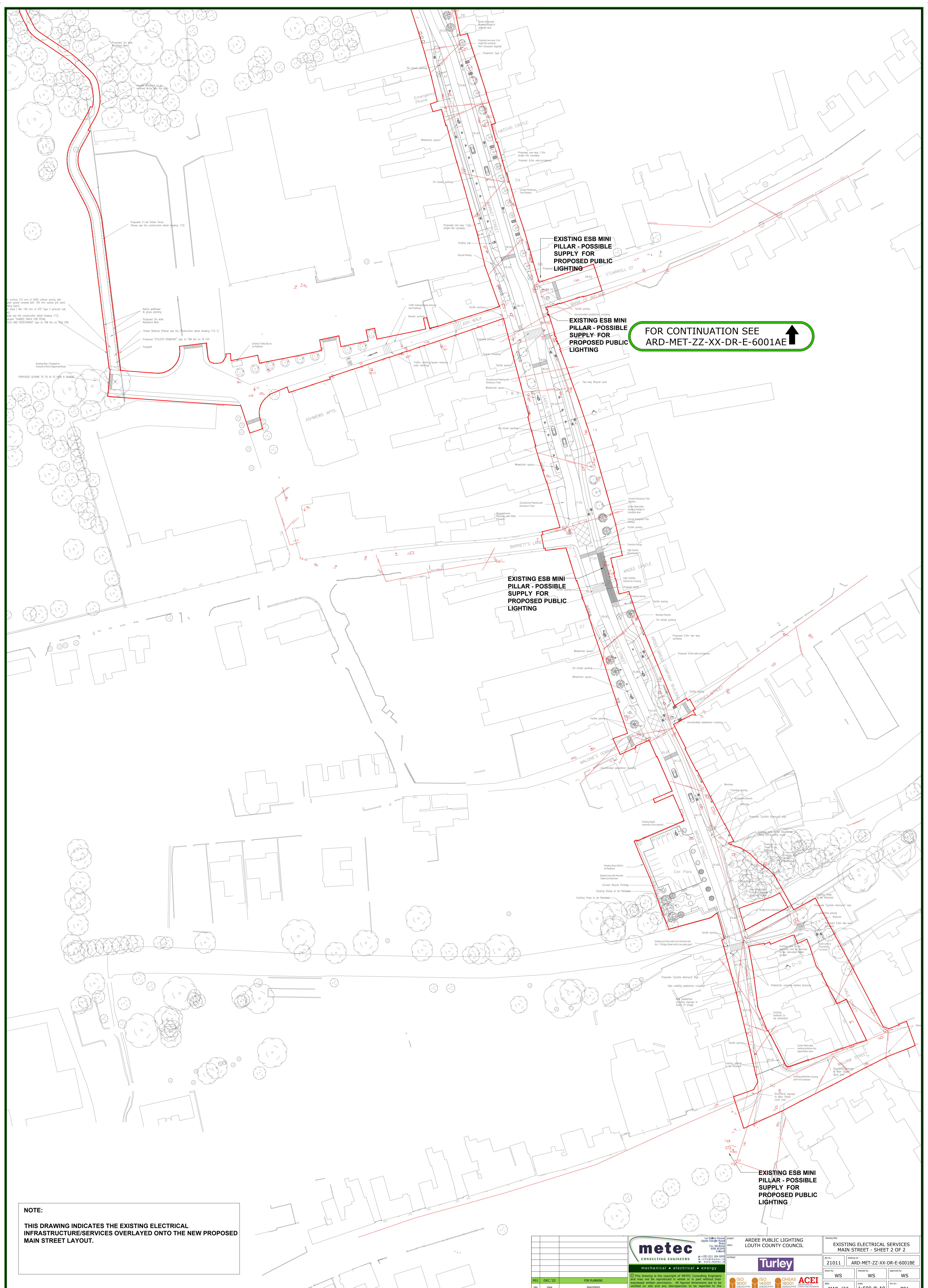
metec
CONSULTING ENGINEERS

p: +353 (0)1 204 009
 e: info@metec.ie
 w: www.metec.ie

mechanical • electrical • energy

© This drawing is the copyright of METEC Consulting Engineers and may not be reproduced in whole or in part without their expressed written permission. All figured dimensions are to be verified on site and any discrepancies to be reported to the

project: ARDEE PUBLIC LIGHTING client: LOUTH COUNTY COUNCIL		drawing title: EXISTING ELECTRICAL SERVICES MAIN STREET - SHEET 1 OF 2	
architect: Turley		job no.: 21011	drawing no.: ARD-MET-Z-XX-DR-E-0001AE
drawn by: WS		checked by: WS	approved by: WS
date: MAR '23		scale: 1:500 @ A0	no.: P01



NOTE:


THIS DRAWING INDICATES THE EXISTING ELECTRICAL INFRASTRUCTURE/SERVICES OVERLAYED ONTO THE NEW PROPOSED MAIN STREET LAYOUT.

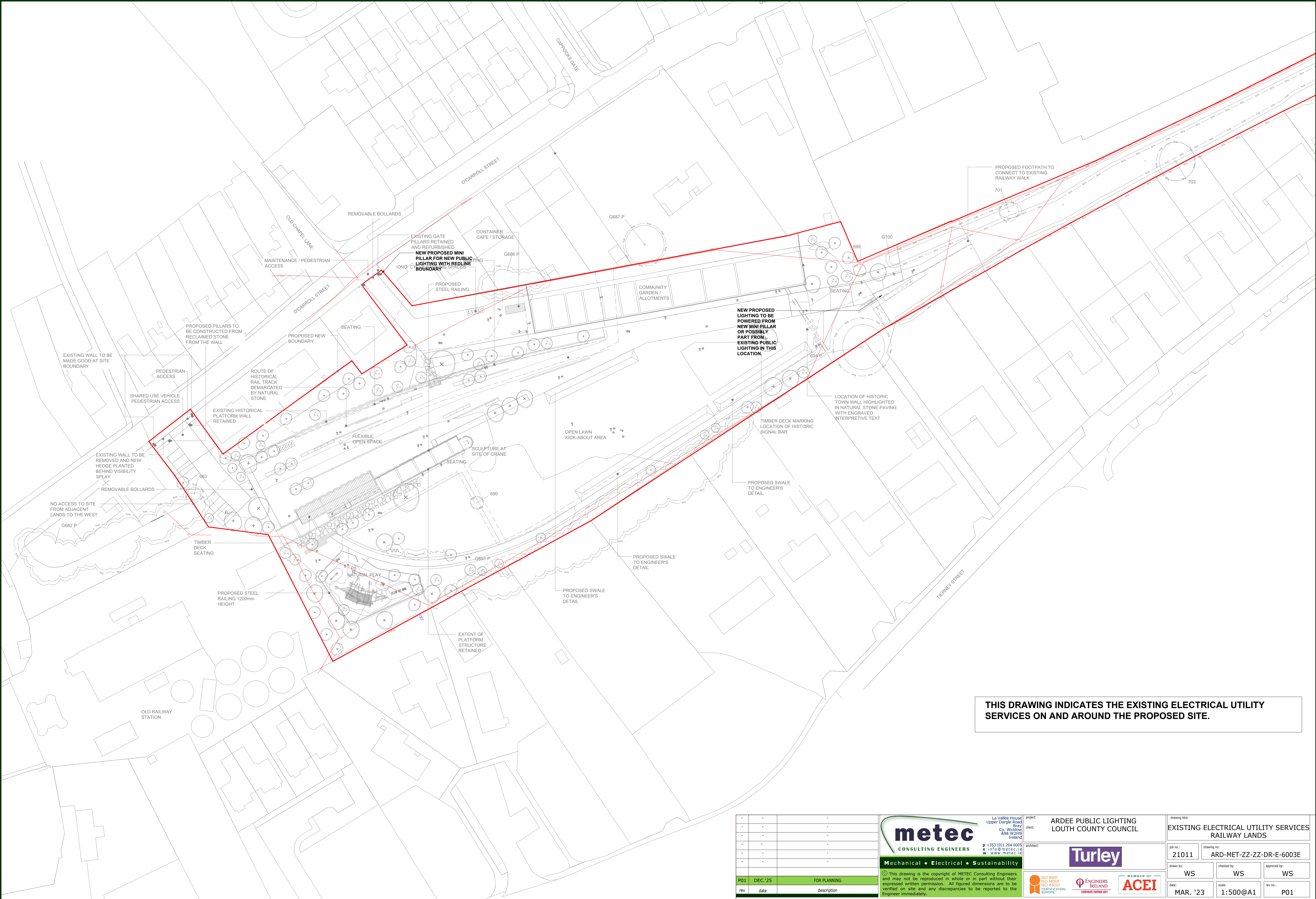
EXISTING ESB MINI PILLAR - POSSIBLE SUPPLY FOR PROPOSED PUBLIC LIGHTING

EXISTING ESB MINI PILLAR - POSSIBLE SUPPLY FOR PROPOSED PUBLIC LIGHTING


FOR CONTINUATION SEE
ARD-MET-ZZ-XX-DR-E-6001AE

EXISTING ESB MINI PILLAR - POSSIBLE SUPPLY FOR PROPOSED PUBLIC LIGHTING

 mechanical • electrical • energy		La Voile & O'Connell Unit 10, 11, 12, 13, 14, 15, 16, 17, 18, 19, 20, 21, 22, 23, 24, 25, 26, 27, 28, 29, 30, 31, 32, 33, 34, 35, 36, 37, 38, 39, 40, 41, 42, 43, 44, 45, 46, 47, 48, 49, 50, 51, 52, 53, 54, 55, 56, 57, 58, 59, 60, 61, 62, 63, 64, 65, 66, 67, 68, 69, 70, 71, 72, 73, 74, 75, 76, 77, 78, 79, 80, 81, 82, 83, 84, 85, 86, 87, 88, 89, 90, 91, 92, 93, 94, 95, 96, 97, 98, 99, 100, 101, 102, 103, 104, 105, 106, 107, 108, 109, 110, 111, 112, 113, 114, 115, 116, 117, 118, 119, 120, 121, 122, 123, 124, 125, 126, 127, 128, 129, 130, 131, 132, 133, 134, 135, 136, 137, 138, 139, 140, 141, 142, 143, 144, 145, 146, 147, 148, 149, 150, 151, 152, 153, 154, 155, 156, 157, 158, 159, 160, 161, 162, 163, 164, 165, 166, 167, 168, 169, 170, 171, 172, 173, 174, 175, 176, 177, 178, 179, 180, 181, 182, 183, 184, 185, 186, 187, 188, 189, 190, 191, 192, 193, 194, 195, 196, 197, 198, 199, 200, 201, 202, 203, 204, 205, 206, 207, 208, 209, 210, 211, 212, 213, 214, 215, 216, 217, 218, 219, 220, 221, 222, 223, 224, 225, 226, 227, 228, 229, 230, 231, 232, 233, 234, 235, 236, 237, 238, 239, 240, 241, 242, 243, 244, 245, 246, 247, 248, 249, 250, 251, 252, 253, 254, 255, 256, 257, 258, 259, 260, 261, 262, 263, 264, 265, 266, 267, 268, 269, 270, 271, 272, 273, 274, 275, 276, 277, 278, 279, 280, 281, 282, 283, 284, 285, 286, 287, 288, 289, 290, 291, 292, 293, 294, 295, 296, 297, 298, 299, 300, 301, 302, 303, 304, 305, 306, 307, 308, 309, 310, 311, 312, 313, 314, 315, 316, 317, 318, 319, 320, 321, 322, 323, 324, 325, 326, 327, 328, 329, 330, 331, 332, 333, 334, 335, 336, 337, 338, 339, 340, 341, 342, 343, 344, 345, 346, 347, 348, 349, 350, 351, 352, 353, 354, 355, 356, 357, 358, 359, 360, 361, 362, 363, 364, 365, 366, 367, 368, 369, 370, 371, 372, 373, 374, 375, 376, 377, 378, 379, 380, 381, 382, 383, 384, 385, 386, 387, 388, 389, 390, 391, 392, 393, 394, 395, 396, 397, 398, 399, 400, 401, 402, 403, 404, 405, 406, 407, 408, 409, 410, 411, 412, 413, 414, 415, 416, 417, 418, 419, 420, 421, 422, 423, 424, 425, 426, 427, 428, 429, 430, 431, 432, 433, 434, 435, 436, 437, 438, 439, 440, 441, 442, 443, 444, 445, 446, 447, 448, 449, 450, 451, 452, 453, 454, 455, 456, 457, 458, 459, 460, 461, 462, 463, 464, 465, 466, 467, 468, 469, 470, 471, 472, 473, 474, 475, 476, 477, 478, 479, 480, 481, 482, 483, 484, 485, 486, 487, 488, 489, 490, 491, 492, 493, 494, 495, 496, 497, 498, 499, 500, 501, 502, 503, 504, 505, 506, 507, 508, 509, 510, 511, 512, 513, 514, 515, 516, 517, 518, 519, 520, 521, 522, 523, 524, 525, 526, 527, 528, 529, 530, 531, 532, 533, 534, 535, 536, 537, 538, 539, 540, 541, 542, 543, 544, 545, 546, 547, 548, 549, 550, 551, 552, 553, 554, 555, 556, 557, 558, 559, 560, 561, 562, 563, 564, 565, 566, 567, 568, 569, 570, 571, 572, 573, 574, 575, 576, 577, 578, 579, 580, 581, 582, 583, 584, 585, 586, 587, 588, 589, 590, 591, 592, 593, 594, 595, 596, 597, 598, 599, 600, 601, 602, 603, 604, 605, 606, 607, 608, 609, 610, 611, 612, 613, 614, 615, 616, 617, 618, 619, 620, 621, 622, 623, 624, 625, 626, 627, 628, 629, 630, 631, 632, 633, 634, 635, 636, 637, 638, 639, 640, 641, 642, 643, 644, 645, 646, 647, 648, 649, 650, 651, 652, 653, 654, 655, 656, 657, 658, 659, 660, 661, 662, 663, 664, 665, 666, 667, 668, 669, 670, 671, 672, 673, 674, 675, 676, 677, 678, 679, 680, 681, 682, 683, 684, 685, 686, 687, 688, 689, 690, 691, 692, 693, 694, 695, 696, 697, 698, 699, 700, 701, 702, 703, 704, 705, 706, 707, 708, 709, 710, 711, 712, 713, 714, 715, 716, 717, 718, 719, 720, 721, 722, 723, 724, 725, 726, 727, 728, 729, 730, 731, 732, 733, 734, 735, 736, 737, 738, 739, 740, 741, 742, 743, 744, 745, 746, 747, 748, 749, 750, 751, 752, 753, 754, 755, 756, 757, 758, 759, 760, 761, 762, 763, 764, 765, 766, 767, 768, 769, 770, 771, 772, 773, 774, 775, 776, 777, 778, 779, 780, 781, 782, 783, 784, 785, 786, 787, 788, 789, 790, 791, 792, 793, 794, 795, 796, 797, 798, 799, 800, 801, 802, 803, 804, 805, 806, 807, 808, 809, 810, 811, 812, 813, 814, 815, 816, 817, 818, 819, 820, 821, 822, 823, 824, 825, 826, 827, 828, 829, 830, 831, 832, 833, 834, 835, 836, 837, 838, 839, 840, 841, 842, 843, 844, 845, 846, 847, 848, 849, 850, 851, 852, 853, 854, 855, 856, 857, 858, 859, 860, 861, 862, 863, 864, 865, 866, 867, 868, 869, 870, 871, 872, 873, 874, 875, 876, 877, 878, 879, 880, 881, 882, 883, 884, 885, 886, 887, 888, 889, 890, 891, 892, 893, 894, 895, 896, 897, 898, 899, 900, 901, 902, 903, 904, 905, 906, 907, 908, 909, 910, 911, 912, 913, 914, 915, 916, 917, 918, 919, 920, 921, 922, 923, 924, 925, 926, 927, 928, 929, 930, 931, 932, 933, 934, 935, 936, 937, 938, 939, 940, 941, 942, 943, 944, 945, 946, 947, 948, 949, 950, 951, 952, 953, 954, 955, 956, 957, 958, 959, 960, 961, 962, 963, 964, 965, 966, 967, 968, 969, 970, 971, 972, 973, 974, 975, 976, 977, 978, 979, 980, 981, 982, 983, 984, 985, 986, 987, 988, 989, 990, 991, 992, 993, 994, 995, 996, 997, 998, 999, 1000		project: ARDEE PUBLIC LIGHTING client: LOUTH COUNTY COUNCIL drawing title: EXISTING ELECTRICAL SERVICES MAIN STREET - SHEET 2 OF 2 drawing no: 21011 drawing date: 21011 drawing by: WS checked by: WS approved by: WS date: MAR. '23 scale: 1:500 @ A0 rev. no.: P01
---	--	---	--	--



-	-	-
-	-	-
-	-	-
-	-	-
-	-	-
-	-	-
-	-	-
P01	DEC.'25	FOR PLANNING
rev	date	description



La Vallée House
Upper Dingle Road
Bray
Co. Wick
A98 W2H9
Ireland
p: +353 (0)1 204 0005
e: info@metec.ie
w: www.metec.ie

Mechanical • Electrical • Sustainability

© This drawing is the copyright of METEC Consulting Engineers and may not be reproduced in whole or in part without their expressed written permission. All figured dimensions are to be verified on site and any discrepancies to be reported to the Engineer immediately.

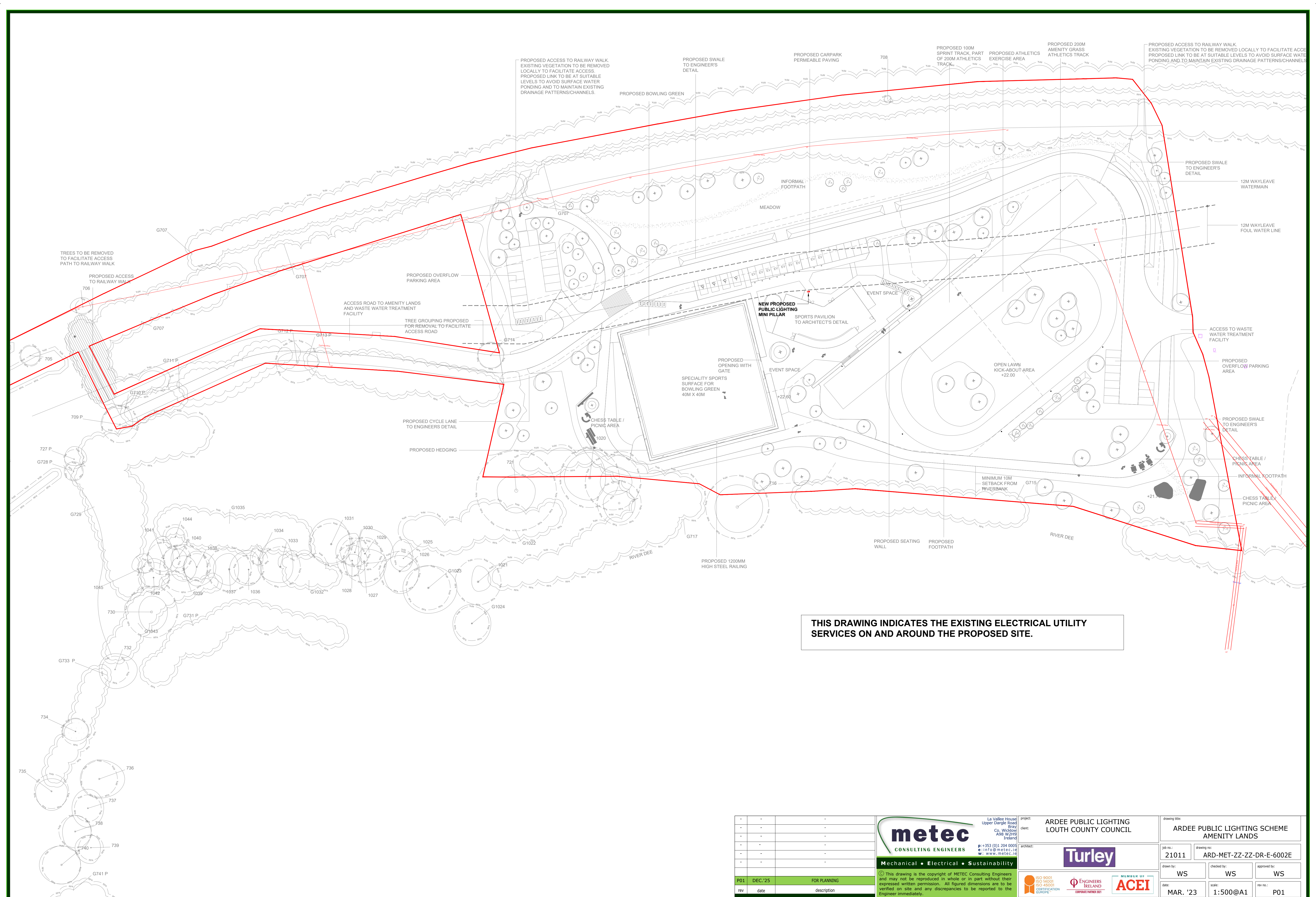
project: ARDEE PUBLIC LIGHTING
LOUTH COUNTY COUNCIL

client:


architect: 



drawing title: EXISTING ELECTRICAL UTILITY SERVICES RAILWAY LANDS		
job no.: 21011	drawing no: ARD-MET-ZZ-ZZ-DR-E-6003E	
drawn by: WS	checked by: WS	approved by: WS
date: MAR. '23	scale: 1:500@A1	rev no.: P01



-	-	-
-	-	-
-	-	-
-	-	-
-	-	-
-	-	-
-	-	-
-	-	-
P01	DEC.'25	FOR PLANNING
rev	date	description




La Valles House
Upper Dingle Road
Bray
Co. Wicklow
A98 W2H9
Ireland
p: +353 (0)1 204 0005
e: info@metec.ie
w: www.metec.ie




Mechanical • Electrical • Sustainability

© This drawing is the copyright of METEC Consulting Engineers and may not be reproduced in whole or in part without their expressed written permission. All figured dimensions are to be verified on site and any discrepancies to be reported to the Engineer immediately.

project: ARDEE PUBLIC LIGHTING
LOUTH COUNTY COUNCIL

client:

architect: 

drawing title: ARDEE PUBLIC LIGHTING SCHEME AMENITY LANDS		
job no.: 21011	drawing no.: ARD-MET-ZZ-ZZ-DR-E-6002E	
drawn by: WS	checked by: WS	approved by: WS
date: MAR. '23	scale: 1:500@A1	rev no.: P01

LiAS Design Notes

This preliminary design is produced by the Lighting Application Specialist (LiAS) team of Signify UK based on information supplied by the Customer for the purpose of identifying suitable products and costing the proposal. This design cannot be used for Construction, as this design does not purport to eliminate health and safety risks as a CDM Regulation risk assessment has not been undertaken.

Depending on the level of information received, a number of assumptions may have been applied in order to create an indicative lighting proposal and costing model, according to lighting industry guidelines and incorporating industry best practice methods. These assumptions are documented below and will require confirmation by the Principal Designer (which is not Signify UK) during the detailed design phase.

Project Specific Design Comments:

- Where 'Lighting Classes' have not been provided/specified, the calculations have been produced using lighting class C3.
- Design uses 8m column heights on main high street, and 6m columns on side roads
- Preliminary Design proposals produced by the Signify LiAS Team are not to be used for installation purposes. It is the responsibility of the Principal Designer and/or Principal Contractor to ensure all Installation and Maintenance can be done in a safe manner, carried out by competent persons, based on their agreed Risk Assessments and Method Statements.
- The Luminaire Maintenance Factors have been based on 6-year cleaning intervals within an E3/E4 Environmental Zone and it is assumed that lamp/luminaire failures will be replaced on a 'spot replacement'.
- Energy consumptions have been based on the luminaire/s having Constant Light Output (CLO) enabled and the quoted wattage/s are the average over 100,000 hours (without dimming).
- The design calculations produced by Signify do not account for the effect obstructions, such as trees, will cause.
- Signify has not been provided with utility plans showing Buried, Above Ground or Overhead utilities. Therefore, all column/luminaire locations are indicative and are subject to review/verification by the Principal Designer.
- Unless stated otherwise, Signify has not visited site. Therefore, all column/luminaire locations are indicative and are subject to an onsite verification arranged/performed by the Principal Designer.
- Signify has not produced any Private Cable Network electrical calculations or reviewed the DNO network to confirm power supplies to the proposed lighting.
- Signify has not performed any asset condition testing and therefore assumes that any existing lighting columns/wall mounted brackets are structurally capable of supporting the weight & windage of the proposed luminaire/s. This must be verified by the Principal Designer before installation works commence.
- Unless stated otherwise, Signify is not supplying the new lighting columns (including brackets etc) and therefore it is the responsibility of the Principal Designers to confirm that all proposed equipment is suitable for the intended locations (e.g. raise & lower, ground condition, foundation type, saline environment, etc).
- Unless stated otherwise, luminaires will be supplied in their standard colour.

Signify Contacts:

Key Account Manager, Mark Kelly
mark.kelly@signify.com

LEGEND OF SYMBOLS

DENOTES POSITION OF NEW LIGHTS



Column Quantity - 41
Column Height - 8m

Lantern Quantity - 41

Lantern @ 8m - Philips Milewide gen2 DX10 LED85/740



Column Quantity - 19
Column Height - 8m 'Piggy Back'

Lantern @ 8m - Philips Milewide gen2 DX10 LED85/740
Lantern Quantity - 19



Lantern @ 6m - Philips Milewide gen2 DX50 LED35/740
Lantern Quantity - 19



Column Quantity - 12
Column Height - 6m

Lantern Quantity - 12
Lantern - Philips Milewide gen2 DX50 LED35/740



Column Quantity - 3
Column Height - 8m

Lantern Quantity - 3

Lantern - Philips Milewide gen2 DM12 LED65/740



Column Quantity - 3
Column Height - 8m

Lantern Quantity - 3

Lantern - Philips Milewide gen2 DW50 LED115/740



Column Quantity - 3
Column Height - 4m

Lantern Quantity - 3

Lantern - Philips Milewide gen2 DM50 LED20/830







Column Quantity - 1
Column Height - 4m

Lantern Quantity - 1

Lantern - Philips Milewide gen2 DS50 LED20/830

Rev	DSR no.	Comment	Date	LiAS	KAM
0	D-503125	INITIAL PROPOSAL	30/03/23	MG	MK
1	D-549716	HIGHWAY LAYOUT AT NORTH END UPDATED	24/01/24	MG	MK
2	6192316	HIGHWAY LAYOUT UPDATED	03/05/25	MG	MK
3	6557588	HALE STREET & WOODEN BRIDGE FOOTPATH ADDED	16/11/25	MG	MK

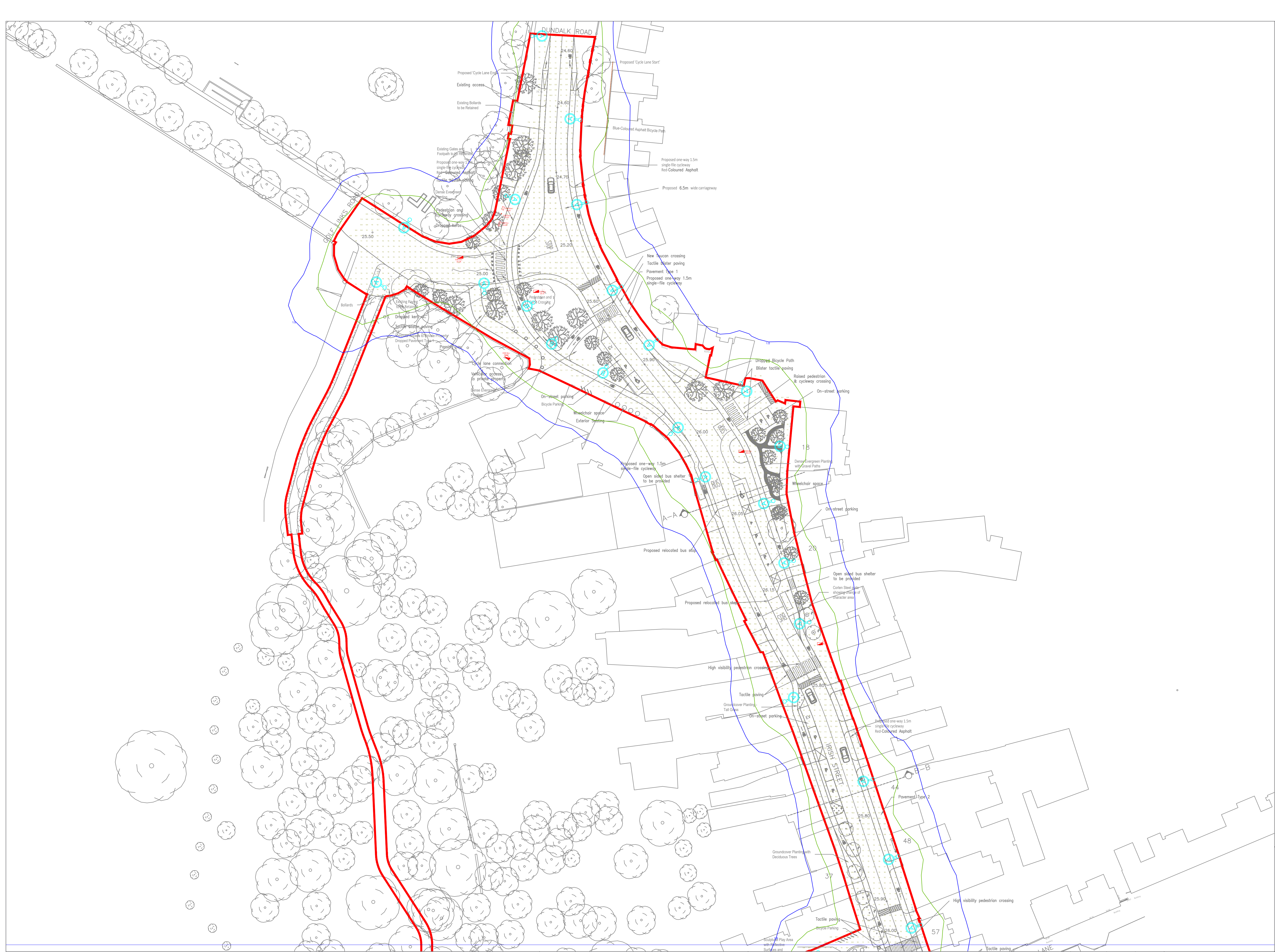
Project Number
501607802
Scale & Sheet Size
NTS @ A3
Sheet No
DWG 00



Project Name
ARDEE LIGHTING MAIN STREET
Drawing Name
LiAS DESIGN NOTES & LUMINAIRE SCHEDULE

PROPOSAL
(NOT FOR CONSTRUCTION)

Lighting Proposal Terms and Conditions of Use
These terms apply to the use of this preliminary proposal produced by Signify UK. This “ Proposal ” is understood to mean this document, a CAD drawing, lighting calculations, written documents, verbal conversations or any medium used to demonstrate or communicate the proposed lighting scheme using products from Signify’s brands. A “ Customer ” is the person or organisation for whom the Proposal is intended. The “ CDM Regulations ” means The Construction, Design and Management Regulations 2015, the Safety, Health & Welfare at Work Act 2005, The Construction (Design & Management) Regulations (Northern Ireland) 2015.
This Proposal is for guidance only and cannot be relied upon for purposes of installation or Health and Safety.
The supply and installation of this lighting scheme are subject to a contract being agreed between Customer and Signify.



LEGEND OF SYMBOLS

- DENOTES POSITION OF NEW LIGHTS**
- Column Quantity - 41
Column Height - 8m
Lantern Quantity - 41
Lantern @ 8m - Philips Milewide gen2 DX10 LED85/740
- Column Quantity - 19
Column Height - 8m 'Piggy Back'
Lantern @ 8m - Philips Milewide gen2 DX10 LED85/740
Lantern Quantity - 19
- Lantern @ 6m - Philips Milewide gen2 DX50 LED35/740
Lantern Quantity - 19
- Column Quantity - 12
Column Height - 6m
Lantern Quantity - 12
Lantern - Philips Milewide gen2 DX50 LED35/740
- Column Quantity - 3
Column Height - 8m
Lantern Quantity - 3
Lantern - Philips Milewide gen2 DM12 LED65/740
- Column Quantity - 3
Column Height - 8m
Lantern Quantity - 3
Lantern - Philips Milewide gen2 DW50 LED115/740
- Column Quantity - 3
Column Height - 4m
Lantern Quantity - 3
Lantern - Philips Milewide gen2 DM50 LED20/830
- Column Quantity - 1
Column Height - 4m
Lantern Quantity - 1
Lantern - Philips Milewide gen2 DS50 LED20/830

Lighting Design Summary

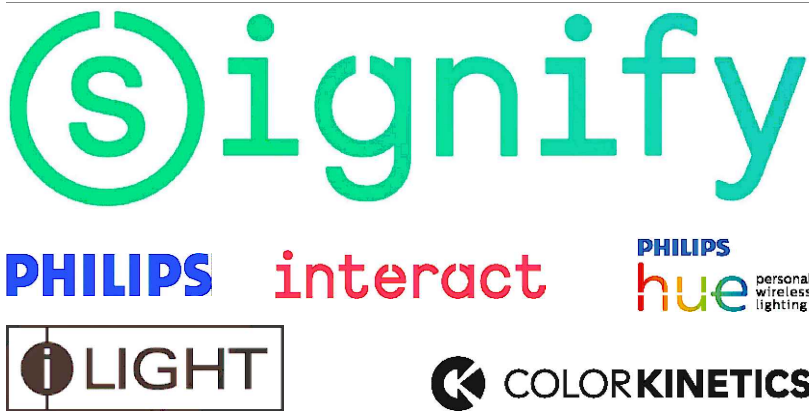
Grid 1
Results - Horizontal Illuminance (lux)
Eav= 12.22
Emin= 4.90
Emax= 27.57
Emin/Emax= 0.18
Emin/Eav= 0.40

Grid 2
Results - Horizontal Illuminance (lux)
Eav= 12.34
Emin= 4.88
Emax= 27.38
Emin/Emax= 0.18
Emin/Eav= 0.40

Grid 3
Results - Horizontal Illuminance (lux)
Eav= 13.15
Emin= 5.28
Emax= 28.90
Emin/Emax= 0.20
Emin/Eav= 0.40

Grid 4
Results - Horizontal Illuminance (lux)
Eav= 11.34
Emin= 4.62
Emax= 26.00
Emin/Emax= 0.17
Emin/Eav= 0.40

Grid 5
Results - Horizontal Illuminance (lux)
Eav= 6.28
Emin= 1.11
Emax= 18.35
Emin/Emax= 0.06
Emin/Eav= 0.18



Notes:

1) Unless agreed otherwise, the lighting proposal produced by the Lighting Application Specialist (LIAS) team of Signify UK&I is not intended for construction purposes, as it does not take into account the elimination of health and safety risks at this stage. For further details please refer to sheet number **DWG 00**

2) Do not scale for this drawing

PROPOSAL
(NOT FOR CONSTRUCTION)

Rev	DSR no.	Comment	Date	LIAS	KAM
0	D-503125	INITIAL PROPOSAL	30/03/23	MG	MK
1	D-549716	HIGHWAY LAYOUT AT NORTH END UPDATED	24/01/24	MG	MK
2	6192316	HIGHWAY LAYOUT UPDATED	03/05/25	MG	MK
3	6557588	HALE STREET & WOODEN BRIDGE FOOTPATH ADDED	16/11/25	MG	MK

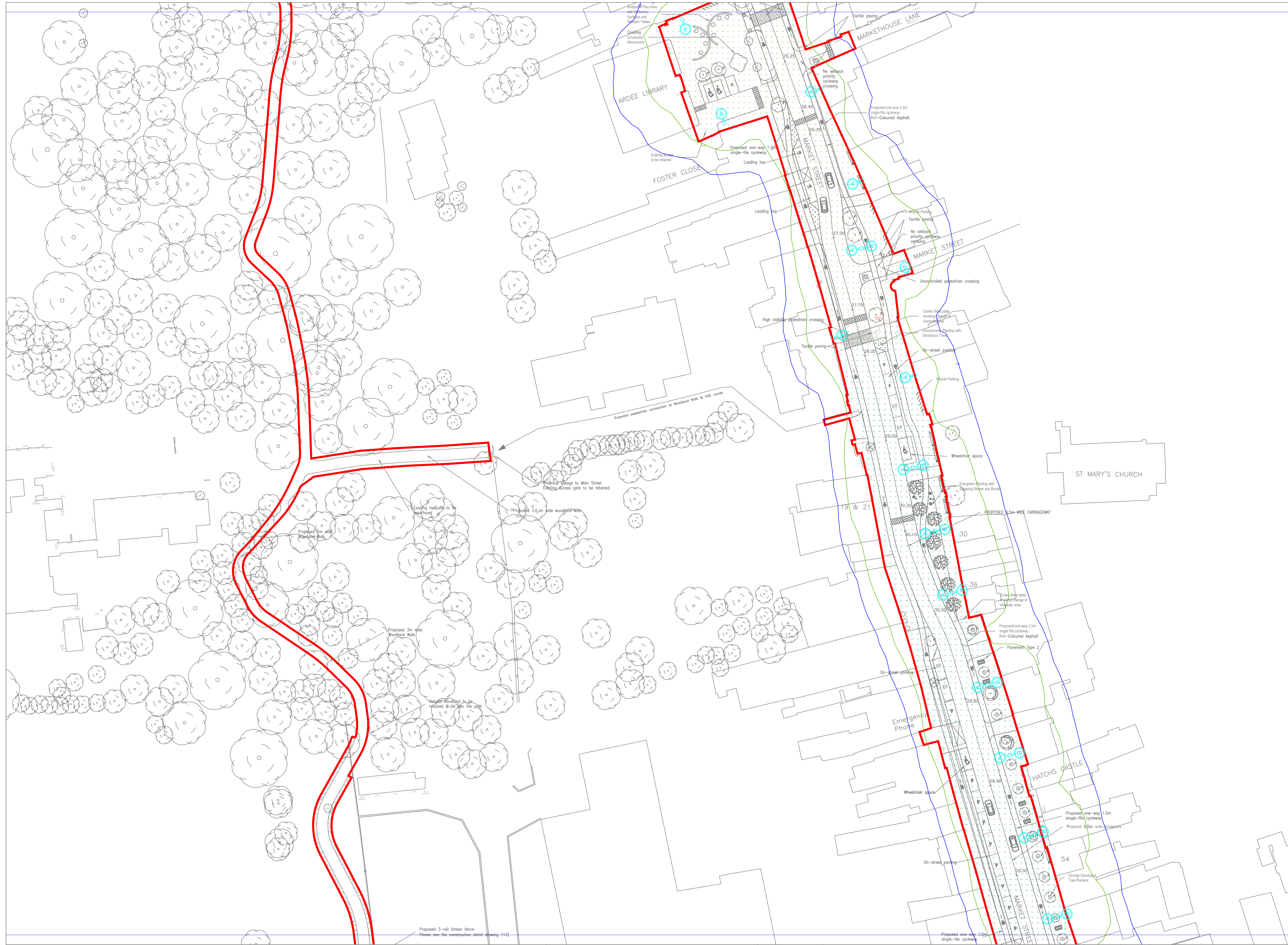
Project Number
501607802

Scale & Sheet Size
500:1 @ A1

Sheet No
DWG 01

Project Name
**ARDEE LIGHTING
MAIN STREET**

Drawing Name
**PROPOSED LIGHTING
LAYOUT**



LEGEND OF SYMBOLS

- DENOTES POSITION OF NEW LIGHTS**
- Column Quantity - 41
Column Height - 8m
- Lantern Quantity - 41
- Lantern @ 8m - Philips Milewide gen2 DX10 LED85/740
- Column Quantity - 19
Column Height - 8m 'Piggy Back'
- Lantern @ 8m - Philips Milewide gen2 DX10 LED85/740
Lantern Quantity - 19
- Lantern @ 6m - Philips Milewide gen2 DX50 LED35/740
Lantern Quantity - 19
- Column Quantity - 12
Column Height - 6m
- Lantern Quantity - 12
Lantern - Philips Milewide gen2 DX50 LED35/740
- Column Quantity - 3
Column Height - 8m
- Lantern Quantity - 3
- Lantern - Philips Milewide gen2 DM12 LED65/740
- Column Quantity - 3
Column Height - 8m
- Lantern Quantity - 3
- Lantern - Philips Milewide gen2 DW50 LED115/740
- Column Quantity - 3
Column Height - 4m
- Lantern Quantity - 3
- Lantern - Philips Milewide gen2 DM50 LED20/830
- Column Quantity - 1
Column Height - 4m
- Lantern Quantity - 1
- Lantern - Philips Milewide gen2 DS50 LED20/830

Lighting Design Summary

Grid 1
Results - Horizontal Illuminance (lux)
Eav= 12.22
Emin= 4.90
Emax= 27.57
Emin/Emax= 0.18
Emin/Eav= 0.40

Grid 2
Results - Horizontal Illuminance (lux)
Eav= 12.34
Emin= 4.88
Emax= 27.38
Emin/Emax= 0.18
Emin/Eav= 0.40

Grid 3
Results - Horizontal Illuminance (lux)
Eav= 13.15
Emin= 5.28
Emax= 28.90
Emin/Emax= 0.20
Emin/Eav= 0.40

Grid 4
Results - Horizontal Illuminance (lux)
Eav= 11.34
Emin= 4.62
Emax= 26.00
Emin/Emax= 0.17
Emin/Eav= 0.40

Grid 5
Results - Horizontal Illuminance (lux)
Eav= 6.28
Emin= 1.11
Emax= 18.35
Emin/Emax= 0.06
Emin/Eav= 0.18



Notes:

1) Unless agreed otherwise, the lighting proposal produced by the Lighting Application Specialist (LIAS) team of Signify UK&I is not intended for construction purposes, as it does not take into account the elimination of health and safety risks at this stage. For further details please refer to sheet number **DWG 00**

2) Do not scale for this drawing

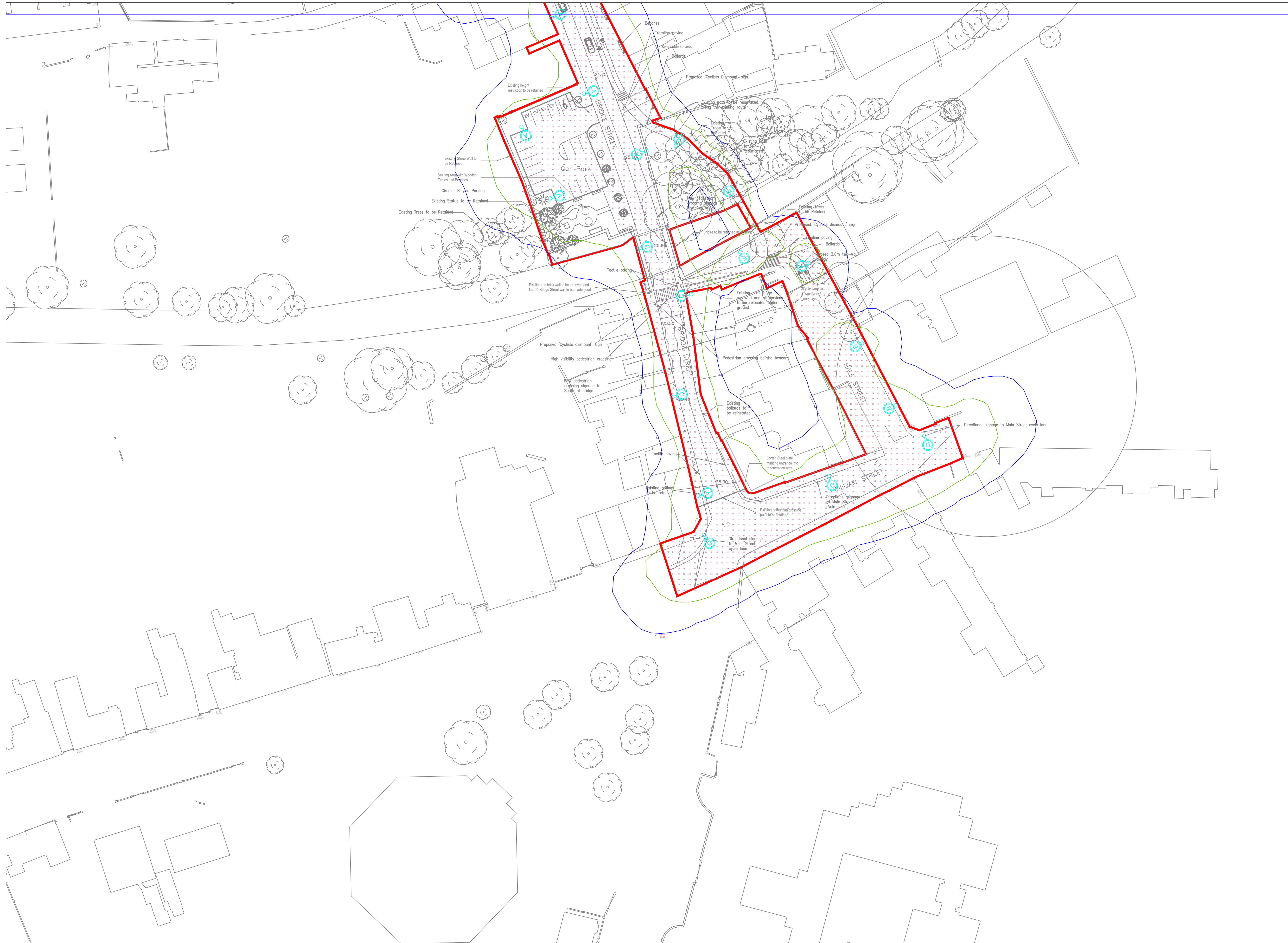
PROPOSAL
(NOT FOR CONSTRUCTION)

Rev	DSR no.	Comment	Date	LIAS	KAM
0	D-503125	INITIAL PROPOSAL	30/03/23	MG	MK
1	D-549716	HIGHWAY LAYOUT AT NORTH END UPDATED	24/01/24	MG	MK
2	6192316	HIGHWAY LAYOUT UPDATED	03/05/25	MG	MK
3	6557588	HALE STREET & WOODEN BRIDGE FOOTPATH ADDED	16/11/25	MG	MK

Project Number
501607802
Scale & Sheet Size
500:1 @ A1
Sheet No
DWG 02

Project Name
ARDEE LIGHTING MAIN STREET
Drawing Name
PROPOSED LIGHTING LAYOUT

DWG 03



LEGEND OF SYMBOLS

- DENOTES POSITION OF NEW LIGHTS**
- A

Column Quantity - 41
Column Height - 8m
Lantern Quantity - 41
Lantern @ 8m - Philips Milewide gen2 DX10 LED85/740
- A

B

Column Quantity - 19
Column Height - 8m 'Piggy Back'
Lantern @ 8m - Philips Milewide gen2 DX10 LED85/740
Lantern Quantity - 19
Lantern @ 6m - Philips Milewide gen2 DX50 LED35/740
Lantern Quantity - 19
- B

Column Quantity - 12
Column Height - 6m
Lantern Quantity - 12
Lantern - Philips Milewide gen2 DX50 LED35/740
- C

Column Quantity - 3
Column Height - 8m
Lantern Quantity - 3
Lantern - Philips Milewide gen2 DM12 LED65/740
- D

Column Quantity - 3
Column Height - 8m
Lantern Quantity - 3
Lantern - Philips Milewide gen2 DW50 LED115/740
- E

Column Quantity - 3
Column Height - 4m
Lantern Quantity - 3
Lantern - Philips Milewide gen2 DM50 LED20/830
- F

Column Quantity - 1
Column Height - 4m
Lantern Quantity - 1
Lantern - Philips Milewide gen2 DS50 LED20/830

Lighting Design Summary

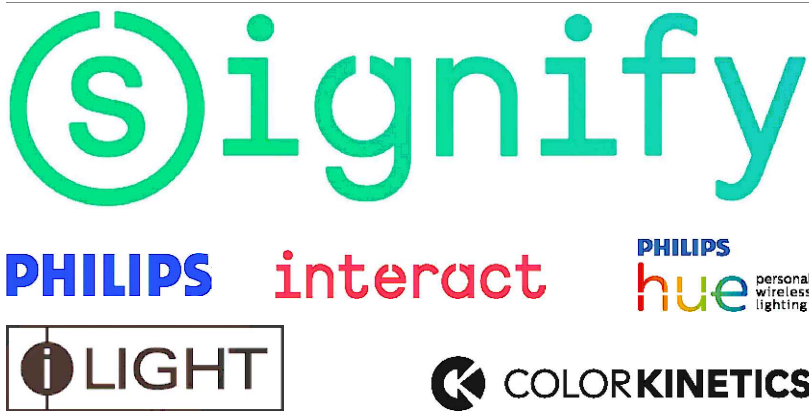
Grid 1
Results - Horizontal Illuminance (lux)
Eavg= 12.22
Emin= 4.90
Emax= 27.57
Emin/Emax= 0.18
Emin/Eavg= 0.40

Grid 2
Results - Horizontal Illuminance (lux)
Eavg= 12.34
Emin= 4.88
Emax= 27.38
Emin/Emax= 0.18
Emin/Eavg= 0.40

Grid 3
Results - Horizontal Illuminance (lux)
Eavg= 13.15
Emin= 5.28
Emax= 28.90
Emin/Emax= 0.20
Emin/Eavg= 0.40

Grid 4
Results - Horizontal Illuminance (lux)
Eavg= 11.34
Emin= 4.62
Emax= 26.00
Emin/Emax= 0.17
Emin/Eavg= 0.40

Grid 5
Results - Horizontal Illuminance (lux)
Eavg= 6.28
Emin= 1.11
Emax= 18.35
Emin/Emax= 0.06
Emin/Eavg= 0.18



- Notes:
- 1) Unless agreed otherwise, the lighting proposal produced by the Lighting Application Specialist (LIAS) team of Signify UK&I is not intended for construction purposes, as it does not take into account the elimination of health and safety risks at this stage. For further details please refer to sheet number **DWG 00**
 - 2) Do not scale for this drawing

PROPOSAL
(NOT FOR CONSTRUCTION)

Rev	DSR no.	Comment	Date	LIAS	KAM
0	D-503125	INITIAL PROPOSAL	30/03/23	MG	MK
1	D-549716	HIGHWAY LAYOUT AT NORTH END UPDATED	24/01/24	MG	MK
2	6192316	HIGHWAY LAYOUT UPDATED	03/05/25	MG	MK
3	6557588	HALE STREET & WOODEN BRIDGE FOOTPATH ADDED	16/11/25	MG	MK

Project Number	501607802
Scale & Sheet Size	500:1 @ A1
Sheet No	DWG 04

Project Name	ARDEE LIGHTING MAIN STREET
Drawing Name	PROPOSED LIGHTING LAYOUT

LEGEND OF SYMBOLS

- DENOTES POSITION OF NEW LIGHTS
- Column Quantity - 41
Column Height - 8m
- A ○ B ○ C ○ D ○ E ○ F
Lantern Quantity - 41
- Lantern @ 8m - Philips Milewide gen2 DX10 LED85/740
- Column Quantity - 19
Column Height - 8m 'Piggy Back'
- Lantern @ 8m - Philips Milewide gen2 DX10 LED85/740
Lantern Quantity - 19
- Lantern @ 6m - Philips Milewide gen2 DX50 LED35/740
Lantern Quantity - 19
- Column Quantity - 10
Column Height - 6m
- Lantern Quantity - 10
Lantern - Philips Milewide gen2 DX50 LED35/740
- Column Quantity - 3
Column Height - 8m
- Lantern Quantity - 3
- Lantern @ 8m - Philips Milewide gen2 DM12 LED65/740

THIS DRAWING INDICATES THE PROPOSED LUMINAIRE LOCATIONS FOR THE NEW LIGHTING DESIGN AND PROPOSED EXISTING ESB MINI PILLARS TO BE UTILISED FOR POWER SUPPLIES.

FOR LIGHTING LEVELS - REFER TO SIGNIFY LAYOUT DRAWINGS.

EXISTING SERVICES HAVE NOT BEEN INCLUDED ON THIS DRAWING AND REMOVAL OR RELOCATION OF SAME HAS NOT BEEN INCLUDED IN THIS JOB SCOPE.

GENERAL LIGHTING FOR ROADS, PATHWAYS AND URBAN AREAS THROUGHOUT LIGHTING SCHEME. LIGHT CONTROLLED BY PHOTOCELL.

- Column Quantity - 3
Column Height - 8m
- Lantern Quantity - 3
- Lantern @ 8m - Philips Milewide gen2 DW50 LED115/740
- Column Quantity - 3
Column Height - 4m
- Lantern Quantity - 3
- Lantern @ 8m - Philips Milewide gen2 DM50 LED20/830
- Column Quantity - 1
Column Height - 4m
- Lantern Quantity - 3
- Lantern @ 8m - Philips Milewide gen2 DS50 LED20/830

- D ○ E ○ F

FOR CONTINUATION SEE ARD-MET-ZZ-XX-DR-E-6001B

EXISTING ESB MINI PILLAR - POSSIBLE SUPPLY FOR PROPOSED PUBLIC LIGHTING

EXISTING ESB MINI PILLAR - POSSIBLE SUPPLY FOR PROPOSED PUBLIC LIGHTING

EXISTING ESB MINI PILLAR - POSSIBLE SUPPLY FOR PROPOSED PUBLIC LIGHTING

EXISTING ESB MINI PILLAR - POSSIBLE SUPPLY FOR PROPOSED PUBLIC LIGHTING

EXISTING ESB MINI PILLAR - POSSIBLE SUPPLY FOR PROPOSED PUBLIC LIGHTING

EXISTING ESB MINI PILLAR - POSSIBLE SUPPLY FOR PROPOSED PUBLIC LIGHTING

EXISTING ESB MINI PILLAR - POSSIBLE SUPPLY FOR PROPOSED PUBLIC LIGHTING

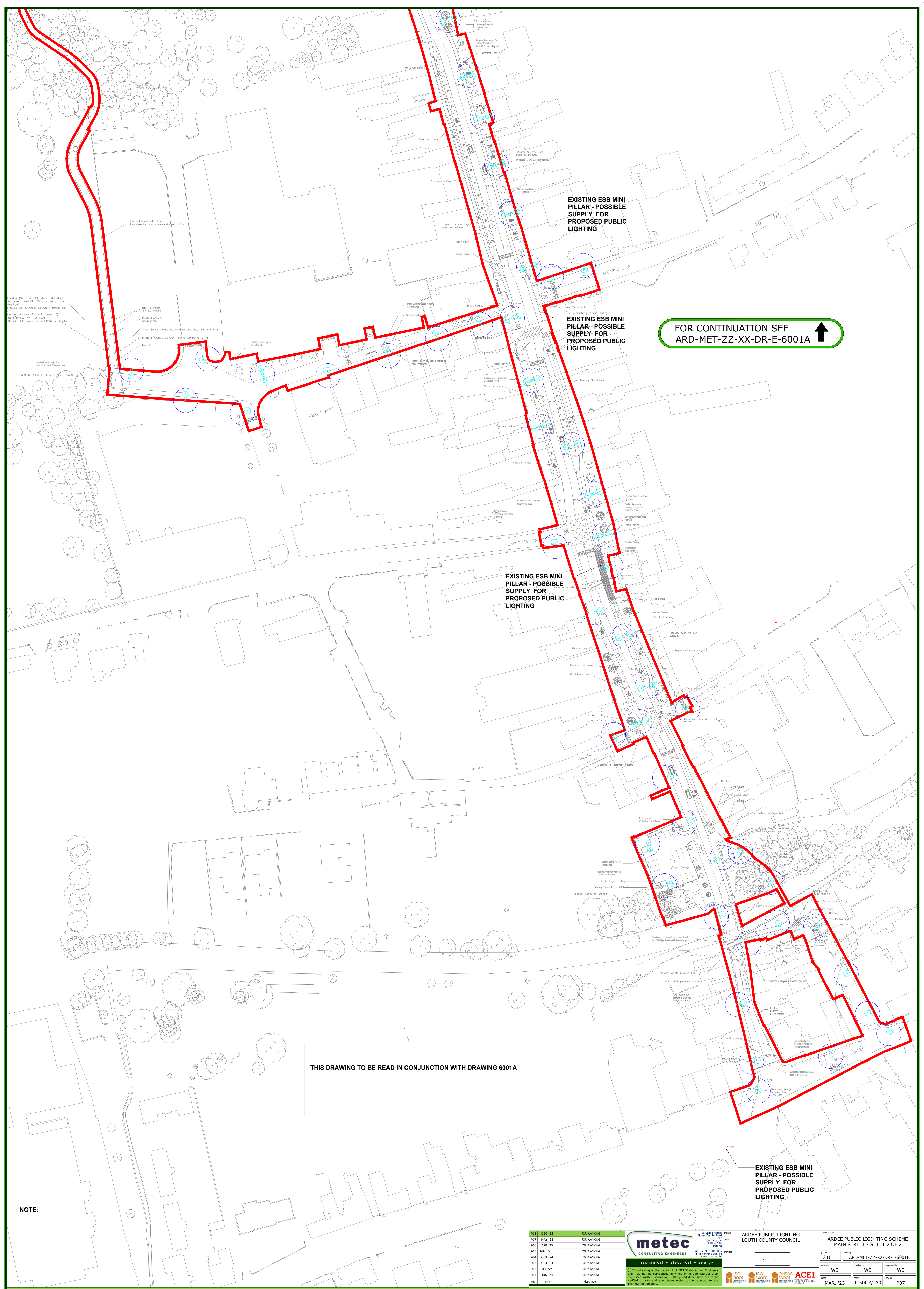
POS	DEC '25	FOR PLANNING
POS	MAY '25	FOR PLANNING
POS	APR '25	FOR PLANNING
POS	MAR '25	FOR PLANNING
POS	OCT '24	FOR PLANNING
POS	JUL '24	FOR PLANNING
POS	JUN '24	FOR PLANNING
rev	date	description

metec CONSULTING ENGINEERS

mechanical • electrical • energy

© This drawing is the copyright of METEC Consulting Engineers and may not be reproduced in whole or in part without their expressed written permission. All figured dimensions are to be verified on site and any discrepancies to be reported to the Engineer immediately.

ARDÉE PUBLIC LIGHTING LOUTH COUNTY COUNCIL		drawing title	
21011		ARD-MET-ZZ-XX-DR-E-6001A	
drawn by:	WS	checked by:	WS
date:	MAR '23	scale:	1:500 @ A0
rev:		rev:	P07



NOTE:

THIS DRAWING TO BE READ IN CONJUNCTION WITH DRAWING 6001A

POS	DEC '25	FOR PLANNING
POS	MAY '25	FOR PLANNING
POS	APR '25	FOR PLANNING
POS	MAR '25	FOR PLANNING
POS	OCT '24	FOR PLANNING
POS	JUL '24	FOR PLANNING
POS	JUN '24	FOR PLANNING
POS	JUN '24	FOR PLANNING
POS	JUN '24	FOR PLANNING

metec
CONSULTING ENGINEERS
mechanical • electrical • energy

© This drawing is the copyright of METEC Consulting Engineers and may not be reproduced in whole or in part without their expressed written permission. All figured dimensions are to be verified on site and any discrepancies to be reported to the Engineer immediately.

PROJECT:	ARDEE PUBLIC LIGHTING	CLIENT:	LOUTH COUNTY COUNCIL	DRAWING NO:	ARD-MET-ZZ-XX-DR-E-6001B
DATE:	21011	DATE:	21011	DATE:	21011
DESIGN BY:	WS	CHECKED BY:	WS	APPROVED BY:	WS
DATE:	MAR '23	SCALE:	1:500 @ A0	REV. NO.:	P07

LiAS Design Notes

This preliminary design is produced by the Lighting Application Specialist (LiAS) team of Signify UK based on information supplied by the Customer for the purpose of identifying suitable products and costing the proposal. This design cannot be used for Construction, as this design does not purport to eliminate health and safety risks as a CDM Regulation risk assessment has not been undertaken.

Depending on the level of information received, a number of assumptions may have been applied in order to create an indicative lighting proposal and costing model, according to lighting industry guidelines and incorporating industry best practice methods. These assumptions are documented below and will require confirmation by the Principal Designer (which is not Signify UK) during the detailed design phase.

Project Specific Design Comments:

- Where 'Lighting Classes' have not been provided/specified, the calculations have been produced using lighting class P4.
- Where column heights have not been provided/specified, these have been assumed to be 4m.
- Preliminary Design proposals produced by the Signify LiAS Team are not to be used for installation purposes. It is the responsibility of the Principal Designer and/or Principal Contractor to ensure all Installation and Maintenance can be done in a safe manner, carried out by competent persons, based on their agreed Risk Assessments and Method Statements.
- The Luminaire Maintenance Factors have been based on 6-year cleaning intervals within an E3/E4 Environmental Zone and it is assumed that lamp/luminaire failures will be replaced on a 'spot replacement'.
- Energy consumptions have been based on the luminaire/s having Constant Light Output (CLO) enabled and the quoted wattage/s are the average over 100,000 hours (without dimming).
- The design calculations produced by Signify do not account for the effect obstructions, such as trees, will cause.
- Signify has not been provided with utility plans showing Buried, Above Ground or Overhead utilities. Therefore, all column/luminaire locations are indicative and are subject to review/verification by the Principal Designer.
- Unless stated otherwise, Signify has not visited site. Therefore, all column/luminaire locations are indicative and are subject to an onsite verification arranged/performed by the Principal Designer.
- Signify has not produced any Private Cable Network electrical calculations or reviewed the DNO network to confirm power supplies to the proposed lighting.
- Signify has not performed any asset condition testing and therefore assumes that any existing lighting columns/wall mounted brackets are structurally capable of supporting the weight & windage of the proposed luminaire/s. This must be verified by the Principal Designer before installation works commence.
- Unless stated otherwise, Signify is not supplying the new lighting columns (including brackets etc) and therefore it is the responsibility of the Principal Designers to confirm that all proposed equipment is suitable for the intended locations (e.g. raise & lower, ground condition, foundation type, saline environment, etc).
- Unless stated otherwise, luminaires will be supplied in their standard colour.

Luminaire Schedule



Column Quantity - 28
Column Height - 6m

Lantern Quantity - 28
Lantern - Philips LumiStreet BGP291
Optic - DW50
Lamp - LED240 (2400 lumens) Colour 740

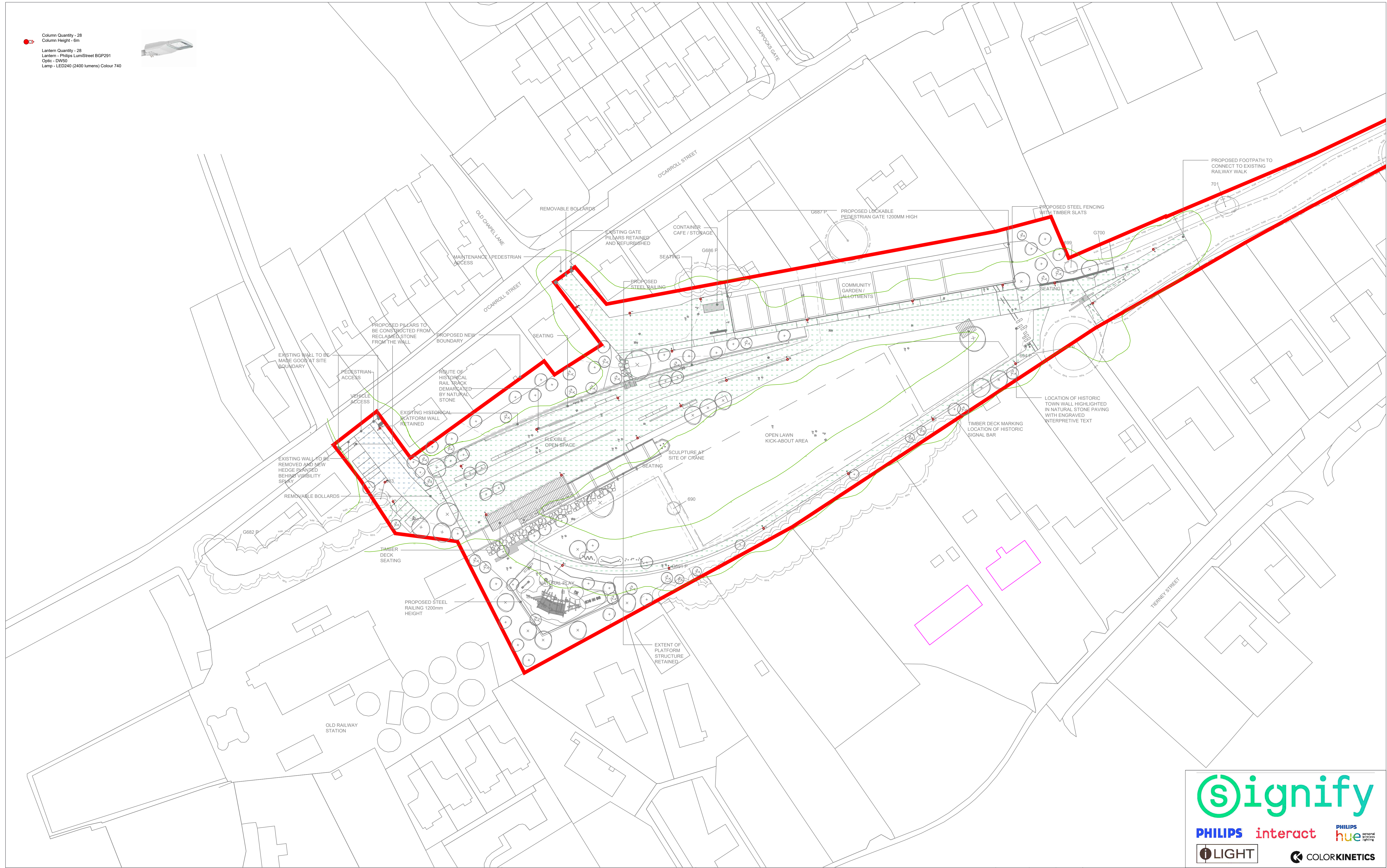


Signify Contacts:

Key Account Manager, Mark Kelly
mark.kelly@signify.com

Rev	DSR no.	Comment	Date	LiAS	KAM	Project Number	Project Name
0	D-502392	INITIAL PROPOSAL	13/03/22	MG	MK	0400848555	ARDEE LIGHTING - RAILWAY LANDS
1	D-544696	NEW LAYOUT, CHANGED TO 6m COLUMNS AND LUMISTREET	19/12/23	MG	MK		
2	D-556164	SMALL CAR PARK ADDED	22/02/24	MG	MK	Scale & Sheet Size	Drawing Name LiAS DESIGN NOTES & LUMINAIRE SCHEDULE
3	6579535	FOOTPATH TO PLAY AREA ADDED	08/11/24	MG	MK	NTS @ A3	
						Sheet No	
						DWG 00	

Column Quantity - 28
Column Height - 6m
Lantern Quantity - 28
Lantern - Philips LumStreet BGP291
Optic - DW50
Lamp - LED240 (2400 lumens) Colour 740



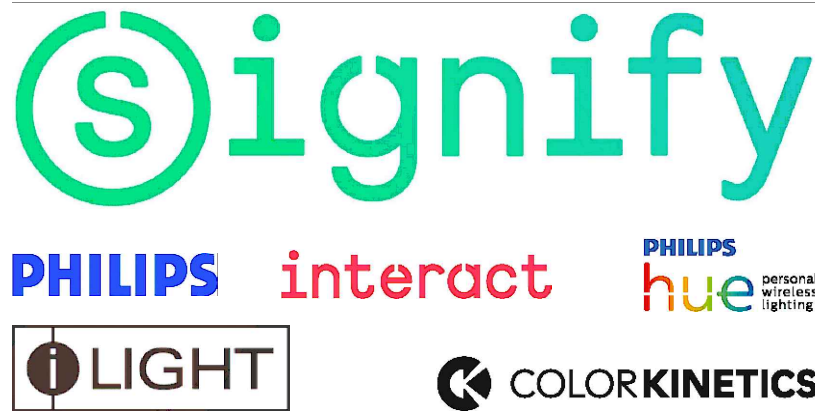
Notes:

- 1) Unless agreed otherwise, the lighting proposal produced by the Lighting Application Specialist (LIAS) team of Signify UK&I is not intended for construction purposes, as it does not take into account the elimination of health and safety risks at this stage. For further details please refer to sheet number **DWG 00**
- 2) Do not scale for this drawing

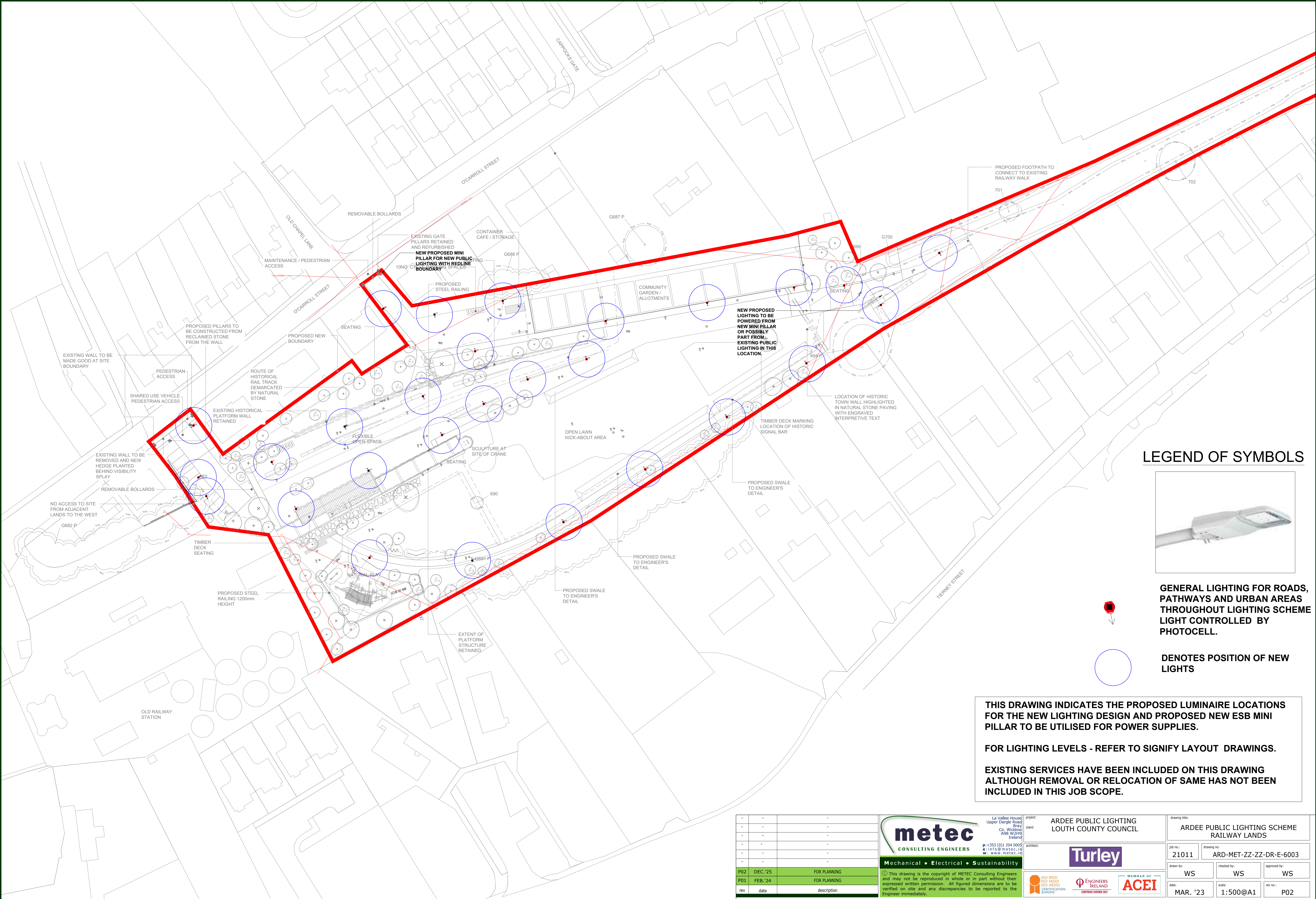
PROPOSAL
(NOT FOR CONSTRUCTION)

Rev	DSR no.	Comment	Date	LIAS	KAM
0	D-502392	INITIAL PROPOSAL	13/03/22	MG	MK
1	D-544696	NEW LAYOUT, CHANGED TO 6m COLUMNS AND LUMISTREET	19/12/23	MG	MK
2	D-556164	SMALL CAR PARK ADDED	22/02/24	MG	MK
3	6579535	FOOTPATH TO PLAY AREA ADDED	08/11/24	MG	MK

Project Number	0400848555
Scale & Sheet Size	500:1 @ A1
Sheet No	DWG 01



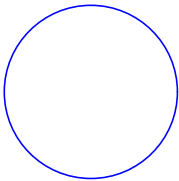
Project Name	ARDEE LIGHTING - RAILWAY LANDS
Drawing Name	PROPOSED LIGHTING LAYOUT



LEGEND OF SYMBOLS



GENERAL LIGHTING FOR ROADS, PATHWAYS AND URBAN AREAS THROUGHOUT LIGHTING SCHEME LIGHT CONTROLLED BY PHOTOCELL.



DENOTES POSITION OF NEW LIGHTS

THIS DRAWING INDICATES THE PROPOSED LUMINAIRE LOCATIONS FOR THE NEW LIGHTING DESIGN AND PROPOSED NEW ESb MINI PILLAR TO BE UTILISED FOR POWER SUPPLIES.

FOR LIGHTING LEVELS - REFER TO SIGNIFY LAYOUT DRAWINGS.

EXISTING SERVICES HAVE BEEN INCLUDED ON THIS DRAWING ALTHOUGH REMOVAL OR RELOCATION OF SAME HAS NOT BEEN INCLUDED IN THIS JOB SCOPE.

-	-	-
-	-	-
-	-	-
-	-	-
-	-	-
-	-	-
P02	DEC.'25	FOR PLANNING
P01	FEB.'24	FOR PLANNING
rev	date	description

La Valles House
Upper Dingle Road
Bray
Co. Wick
A98 W2H9
Ireland
p: +353 (0)1 204 0005
e: info@metec.ie
w: www.metec.ie

Mechanical • Electrical • Sustainability

© This drawing is the copyright of METEC Consulting Engineers and may not be reproduced in whole or in part without their expressed written permission. All figured dimensions are to be verified on site and any discrepancies to be reported to the Engineer immediately.

project:	ARDEE PUBLIC LIGHTING LOUTH COUNTY COUNCIL
client:	
architect:	

drawing title:	ARDEE PUBLIC LIGHTING SCHEME RAILWAY LANDS
job no.:	21011
drawing no.:	ARD-MET-ZZ-ZZ-DR-E-6003
drawn by:	WS
checked by:	WS
approved by:	WS
date:	MAR. '23
scale:	1:500@A1
rev no.:	P02



LiAS Design Notes




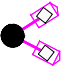

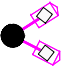
This preliminary design is produced by the Lighting Application Specialist (LiAS) team of Signify UK based on information supplied by the Customer for the purpose of identifying suitable products and costing the proposal. This design cannot be used for Construction, as this design does not purport to eliminate health and safety risks as a CDM Regulation risk assessment has not been undertaken.

Depending on the level of information received, a number of assumptions may have been applied in order to create an indicative lighting proposal and costing model, according to lighting industry guidelines and incorporating industry best practice methods. These assumptions are documented below and will require confirmation by the Principal Designer (which is not Signify UK) during the detailed design phase.

Project Specific Design Comments:

- Where 'Lighting Classes' have not been provided/specified, the calculations have been produced using lighting class P4.
- Where column heights have not been provided/specified, these have been assumed to be 6m.
- Preliminary Design proposals produced by the Signify LiAS Team are not to be used for installation purposes. It is the responsibility of the Principal Designer and/or Principal Contractor to ensure all Installation and Maintenance can be done in a safe manner, carried out by competent persons, based on their agreed Risk Assessments and Method Statements.
- The Luminaire Maintenance Factors have been based on 6-year cleaning intervals within an E3/E4 Environmental Zone and it is assumed that lamp/luminaire failures will be replaced on a 'spot replacement'.
- Energy consumptions have been based on the luminaire/s having Constant Light Output (CLO) enabled and the quoted wattage/s are the average over 100,000 hours (without dimming).
- The design calculations produced by Signify do not account for the effect obstructions, such as trees, will cause.
- Signify has not been provided with utility plans showing Buried, Above Ground or Overhead utilities. Therefore, all column/luminaire locations are indicative and are subject to review/verification by the Principal Designer.
- Unless stated otherwise, Signify has not visited site. Therefore, all column/luminaire locations are indicative and are subject to an onsite verification arranged/performed by the Principal Designer.
- Signify has not produced any Private Cable Network electrical calculations or reviewed the DNO network to confirm power supplies to the proposed lighting.
- Signify has not performed any asset condition testing and therefore assumes that any existing lighting columns/wall mounted brackets are structurally capable of supporting the weight & windage of the proposed luminaire/s. This must be verified by the Principal Designer before installation works commence.
- Unless stated otherwise, Signify is not supplying the new lighting columns (including brackets etc) and therefore it is the responsibility of the Principal Designers to confirm that all proposed equipment is suitable for the intended locations (e.g. raise & lower, ground condition, foundation type, saline environment, etc).
- Unless stated otherwise, luminaires will be supplied in their standard colour.

Luminaire Schedule

	Column Quantity - 33 Column Height - 6m
	Lantern Quantity - 33 Lantern - Philips LumiStreet BGP291 Optic - DW50 Lamp - 3000 lumens 740
	Column Quantity - 16 Column Height - 6m
	Lantern Quantity - 16 Lantern - Philips ClearFloor gen2 BVP656_T25_LED450-4S-740_A65-WB_168 L_FP_L96@100kh
	Column Quantity - 9 Column Height - 8m
	Lantern Quantity - 18 Lantern - Philips ClearFloor gen2 BVP656_T25_LED550-4S-740_A65-WB_LT M_168L_FP_L95@100kh.

Signify Contacts:

Key Account Manager, Mark Kelly
mark.kelly@signify.com



Rev	DSR no.	Comment	Date	LiAS	KAM	Project Number	Project Name
0	D-502392	INITIAL PROPOSAL	13/03/22	MG	MK	0400848555	ARDEE LIGHTING - AMENITY LANDS
1	D-544696	NEW LAYOUT, CHANGED TO 6m COLUMNS AND LUMISTREET	19/12/23	MG	MK		
2	D-556164	SMALL CAR PARK ADDED	22/02/24	MG	MK	Scale & Sheet Size	Drawing Name
3	6579534	RUNNING TRACK AND ADDITIONAL FOOTPATH LIGHTING ADDED	16/11/25	MG	MK	NTS @ A3	LiAS DESIGN NOTES & LUMINAIRE SCHEDULE
						Sheet No	
						DWG 00	

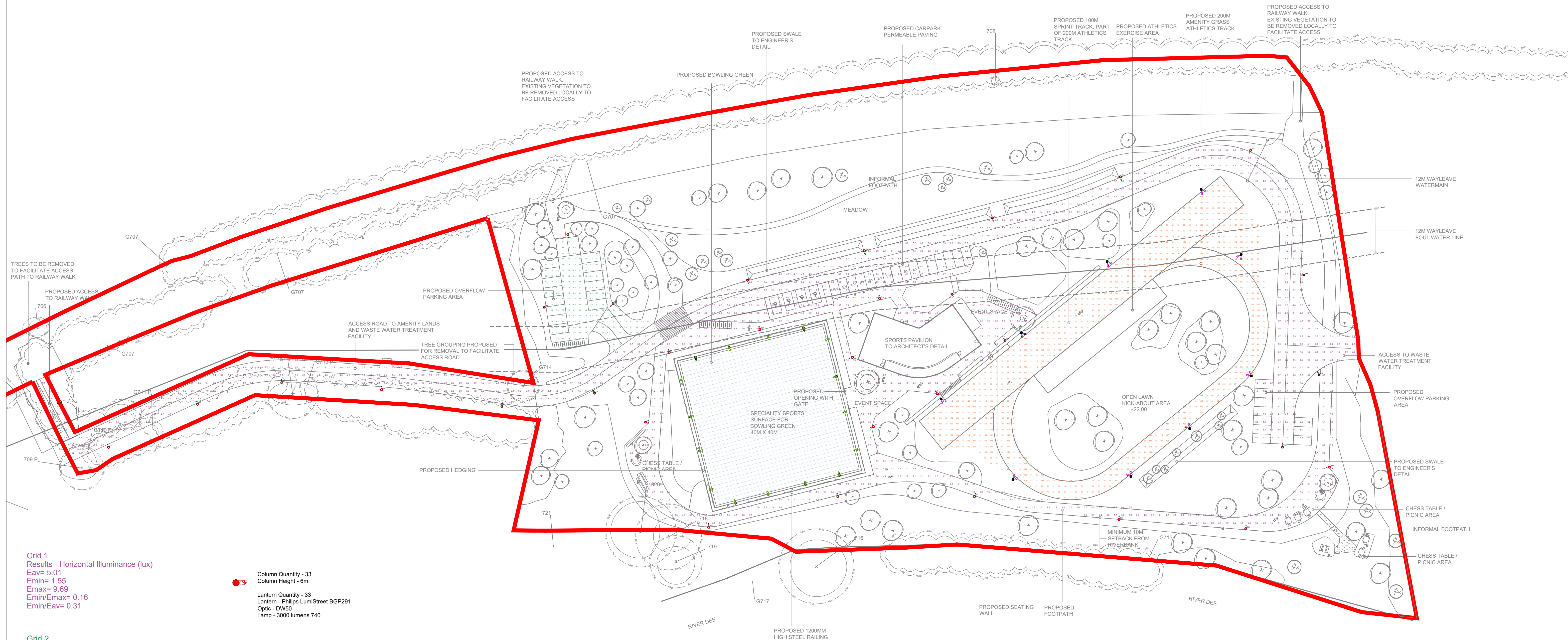
PROPOSAL
(NOT FOR CONSTRUCTION)

Lighting Proposal Terms and Conditions of Use

These terms apply to the use of this preliminary proposal produced by Signify UK. This “**Proposal**” is understood to mean this document, a CAD drawing, lighting calculations, written documents, verbal conversations or any medium used to demonstrate or communicate the proposed lighting scheme using products from Signify’s brands. A “**Customer**” is the person or organisation for whom the Proposal is intended. The “**CDM Regulations**” means The Construction, Design and Management Regulations 2015, the Safety, Health & Welfare at Work Act 2005, The Construction (Design & Management) Regulations (Northern Ireland) 2015.

This Proposal is for guidance only and cannot be relied upon for purposes of installation or Health and Safety.

The supply and installation of this lighting scheme are subject to a contract being agreed between Customer and Signify.



Grid 1
Results - Horizontal Illuminance (lux)
Eav= 5.01
Emin= 1.55
Emax= 9.69
Emin/Emax= 0.16
Emin/Eav= 0.31

Column Quantity - 33
Column Height - 6m
Lantern Quantity - 33
Lantern - Philips LumiStreet BGP291
Optic - DW50
Lamp - 3000 lumens 740

Grid 2
Results - Horizontal Illuminance (lux)
Eav= 6.19
Emin= 2.11
Emax= 8.64
Emin/Emax= 0.24
Emin/Eav= 0.34
Emax/Eav= 1.40

Column Quantity - 16
Column Height - 6m
Lantern Quantity - 16
Lantern - Philips ClearFloor gen2
BVP656_T25_LED450-4S-740_A65-WB_168
L_FP_L96@100kh

Grid 3
Results - Horizontal Illuminance (lux)
Eav= 207.30
Emin= 144.10
Emax= 270.99
Emin/Emax= 0.53
Emin/Eav= 0.70
Emax/Eav= 1.31

Column Quantity - 9
Column Height - 8m
Lantern Quantity - 18
Lantern - Philips ClearFloor gen2
BVP656_T25_LED550-4S-740_A65-WB_LT
M_168L_FP_L95@100kh.

Grid 3
Results - Horizontal Illuminance (lux)
Eav= 104.13
Emin= 51.58
Emax= 156.70
Emin/Emax= 0.33
Emin/Eav= 0.50
Emax/Eav= 1.50

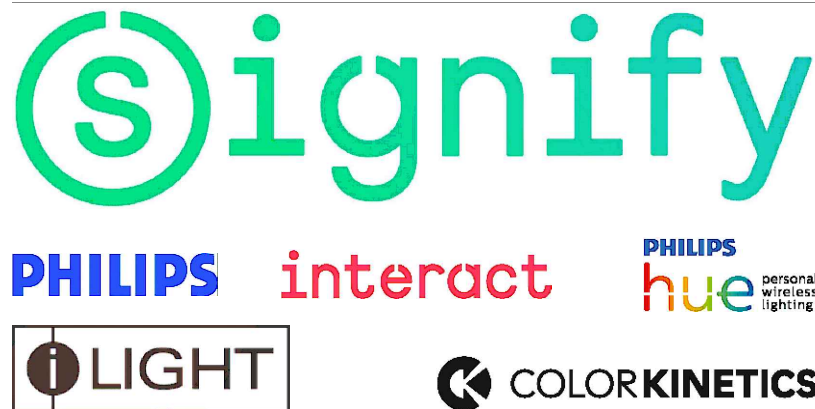
Notes:

- 1) Unless agreed otherwise, the lighting proposal produced by the Lighting Application Specialist (LIAS) team of Signify UK&I is not intended for construction purposes, as it does not take into account the elimination of health and safety risks at this stage. For further details please refer to sheet number **DWG 00**
- 2) Do not scale for this drawing

PROPOSAL
(NOT FOR CONSTRUCTION)

Rev	DSR no.	Comment	Date	LIAS	KAM
0	D-502392	INITIAL PROPOSAL	13/03/22	MG	MK
1	D-544696	NEW LAYOUT, CHANGED TO 6m COLUMNS AND LUMISTREET	19/12/23	MG	MK
2	D-556164	SMALL CAR PARK ADDED	22/02/24	MG	MK
3	6579534	RUNNING TRACK AND ADDITIONAL FOOTPATH LIGHTING ADDED	16/11/25	MG	MK

Project Number	0400848555
Scale & Sheet Size	500:1 @ A1
Sheet No	DWG 01



Project Name	ARDEE LIGHTING - AMENITY LANDS
Drawing Name	PROPOSED LIGHTING LAYOUT

